



ARCHITECTURAL PORTFOLIO

ASLISH L



Flexible workspace is for 200 peoples ,are designed to provide a productive and collaborative environment for their dynamic inhabitants, and created without corporate constraints on what is perceived to be an "office" environment offering flexible memberships to suit most needs. Achieving peoper daylight which increase human comfort is the concept.

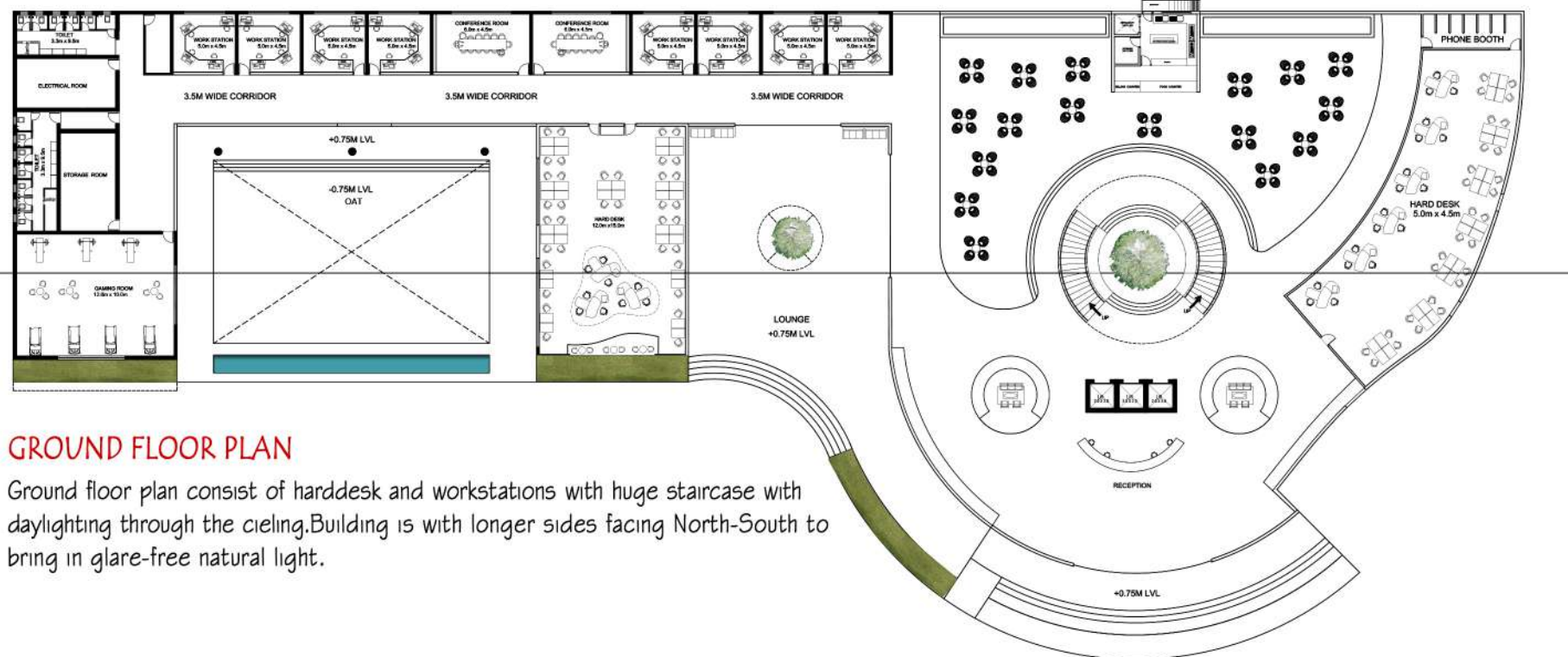
VIEWS



Jalis are a green tool to reduce the energy load of cooling and the costs associated with it. They block off the glare but welcome the much-needed filtered daylight without fully obstructing the view outside. jali efficiently lessen the ingress of heat in the daytime. They also block the entry of direct sunlight, making for pleasant interiors.



VIEWS

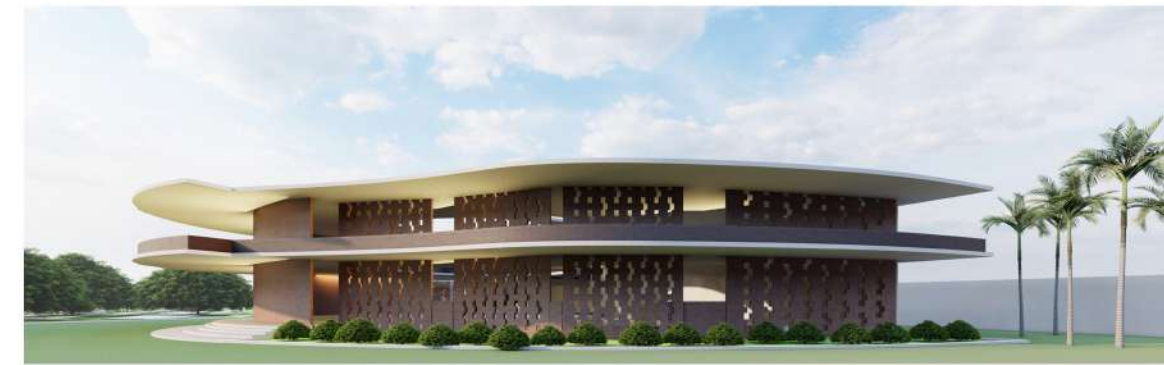


GROUND FLOOR PLAN

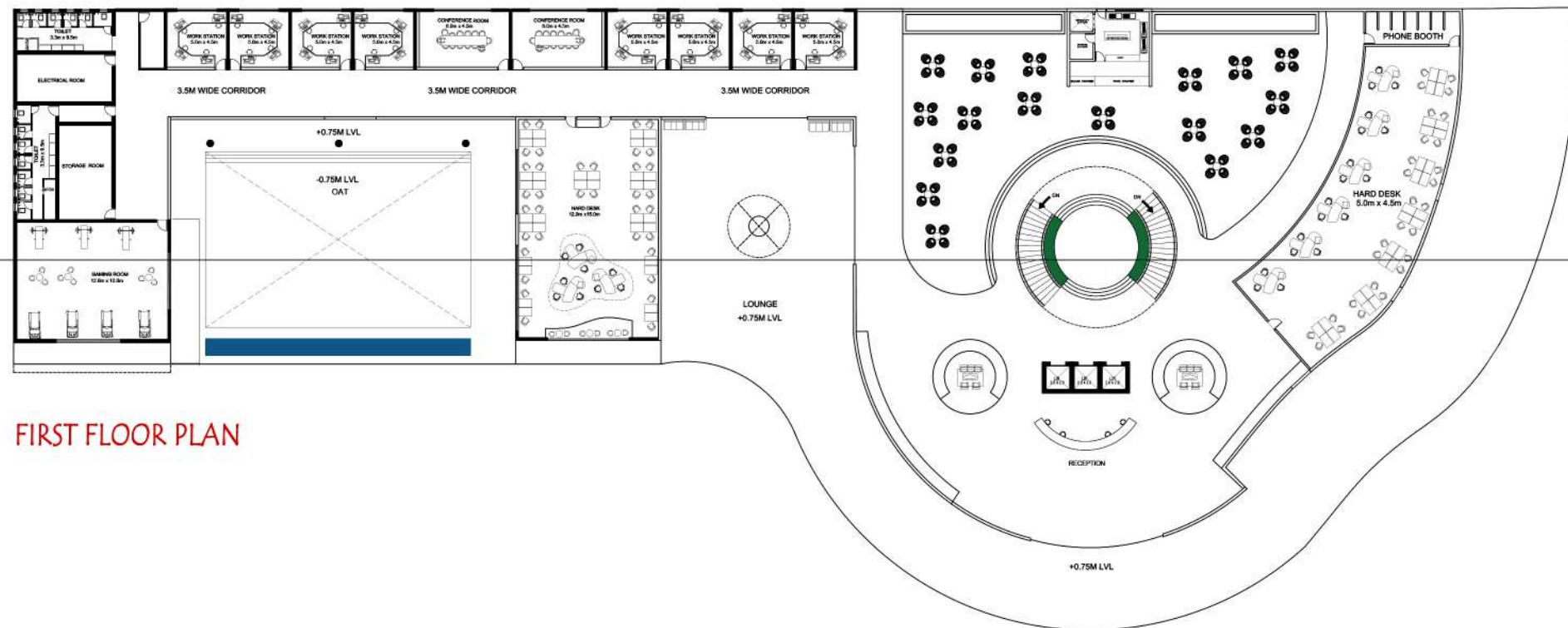
Ground floor plan consist of harddesk and workstations with huge staircase with daylighting through the cieling. Building is with longer sides facing North-South to bring in glare-free natural light.



FRONT ELEVATION



EAST SIDE ELEVATION



FIRST FLOOR PLAN

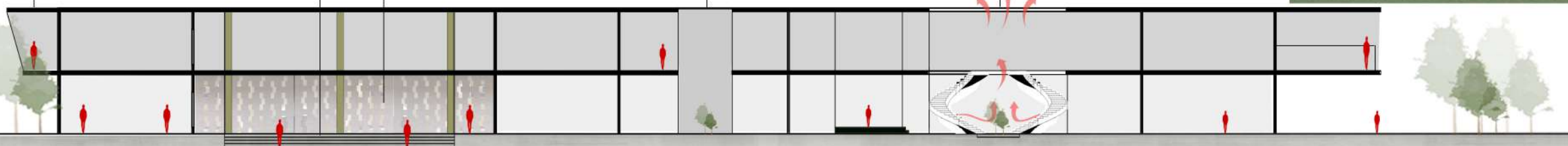


Balcony

OAT

Brick jalli

voluminous atriums which brings in light and allows hot air to escape and houses lifts and staircases.

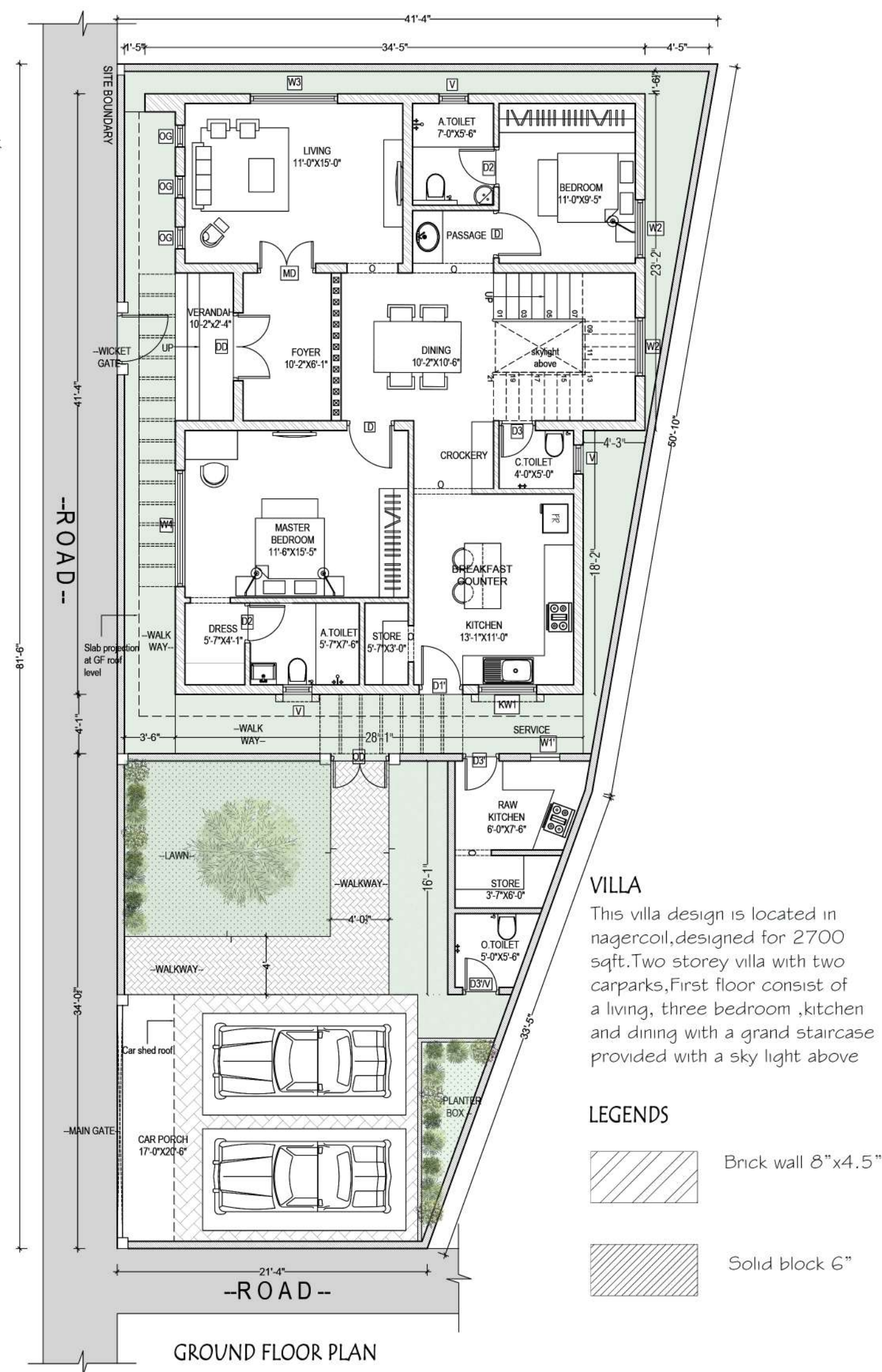


SECTION-AA'



ELEVATION AND VIEW

Elevation design is based on contemporary style with two storey height, which reflects symmetry. This two-storey villa reflect a contemporary house exterior design with glass and wood. Stone cladding to achieve a natural and attractive look for the home. This facade reflect the modern sensibilities of today's lifestyle.



Elevation design based on a mixed of contemporary and traditional with sloped roof as per the client needs.



PARTY HALL INTERIOR



Complex design with three floors with cafe in the ground floor , first floor with labs and offices , second floor consists of residences.Elevation is based on contemporary design .Glass facade for cafe to attract peoples ,wooden textured elevation tile for reflecting contemporary visuals.



ELEVATION AND VIEW



CAFE INTERIOR

ELEVATION FOR RESIDENCE



Elevation design is based on contemporary style with two storey height. This two-storey villa reflect a contemporary house exterior design with glass ,wood,paint textures Stone cladding to achieve a natural and attractive look for the home. This facade reflect the modern sensibilities of today's lifestyle.



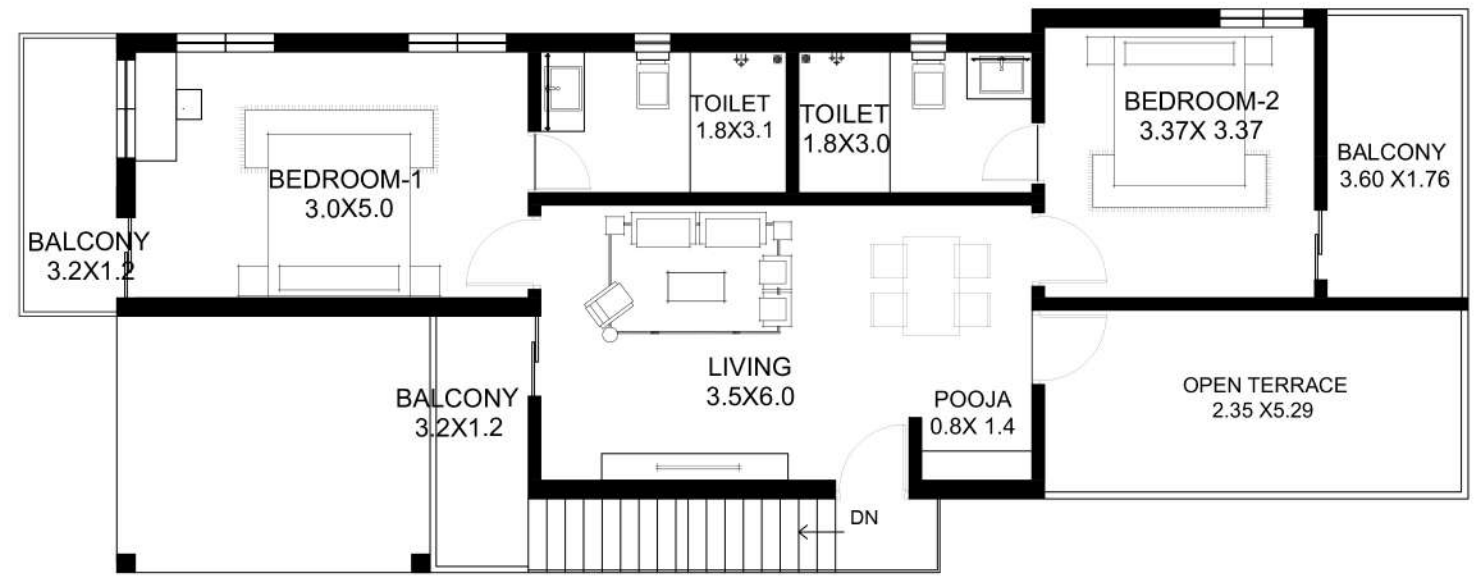
ELEVATION AND VIEW



Elevation design is based on contemporary style with Simple elements,

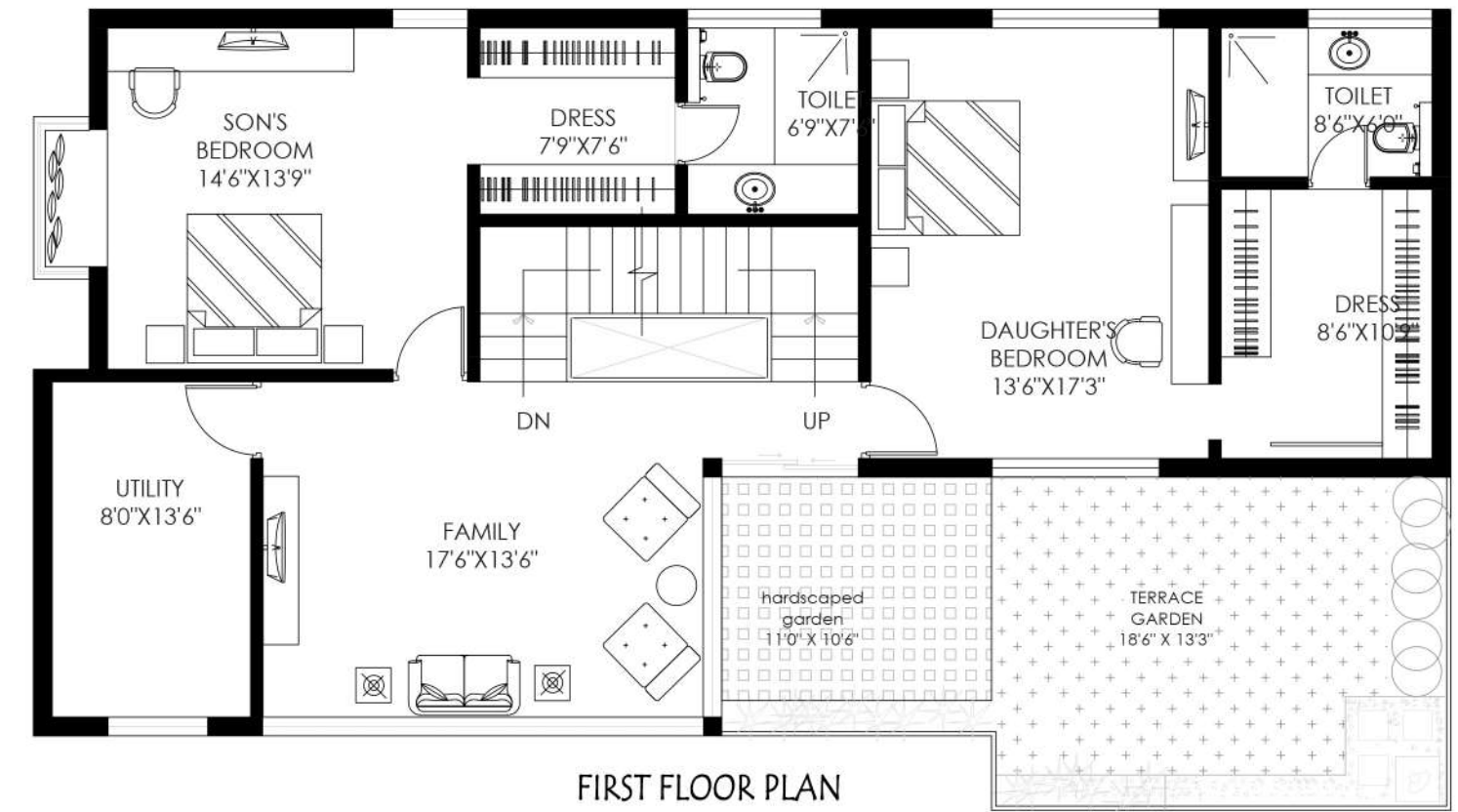
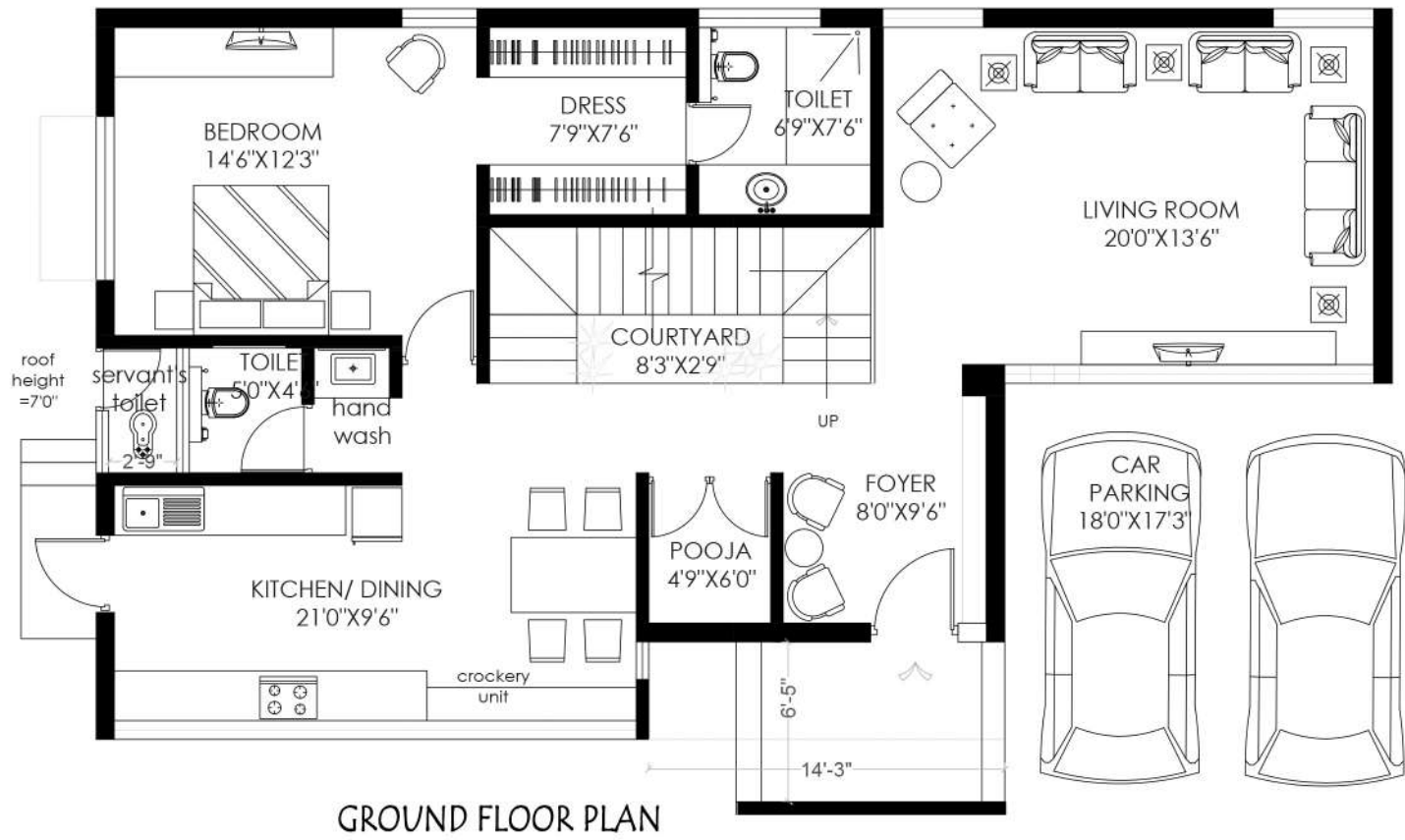


GROUND FLOOR PLAN



FIRST FLOOR PLAN

ELEVATION AND VIEW





RESIDENCE ELEVATION

Elevation design is based on contemporary style with two storey height.



KITCHEN INERIOR

Kitchen is designed with blue colour theme as per client needs. Blue and white coloured glossy cabinets with textured wall and a small breakfast table with two seater along the counter.



RESIDENCE ELEVATION



CONCEPT

Facing the apartment towards a Green area reduces noise levels and acts as natural sound barrier/abatement. It also provides direct views of the outside with ample natural ventilation.



Connecting bridge for social well being



VIEW



Social gathering spaces



KEY PLAN



- Hig apartments
- Row of trees
- Waterbody
- Green space for relaxation
- Visitors parking



Central courtyard

Dividing into two individual apartment blocks with separate corridors with a gap in the middle provides ventilation allowing more natural light into the passage and individual apartments. It also facilitates natural ventilation from the basement to the rooftop, creating an air circulation channel in the central space.

- PARKING
- GREEN OPEN SPACE

GROUND FLOOR PLAN